

Bereavement and Loss: ***Support for schools & local communities***

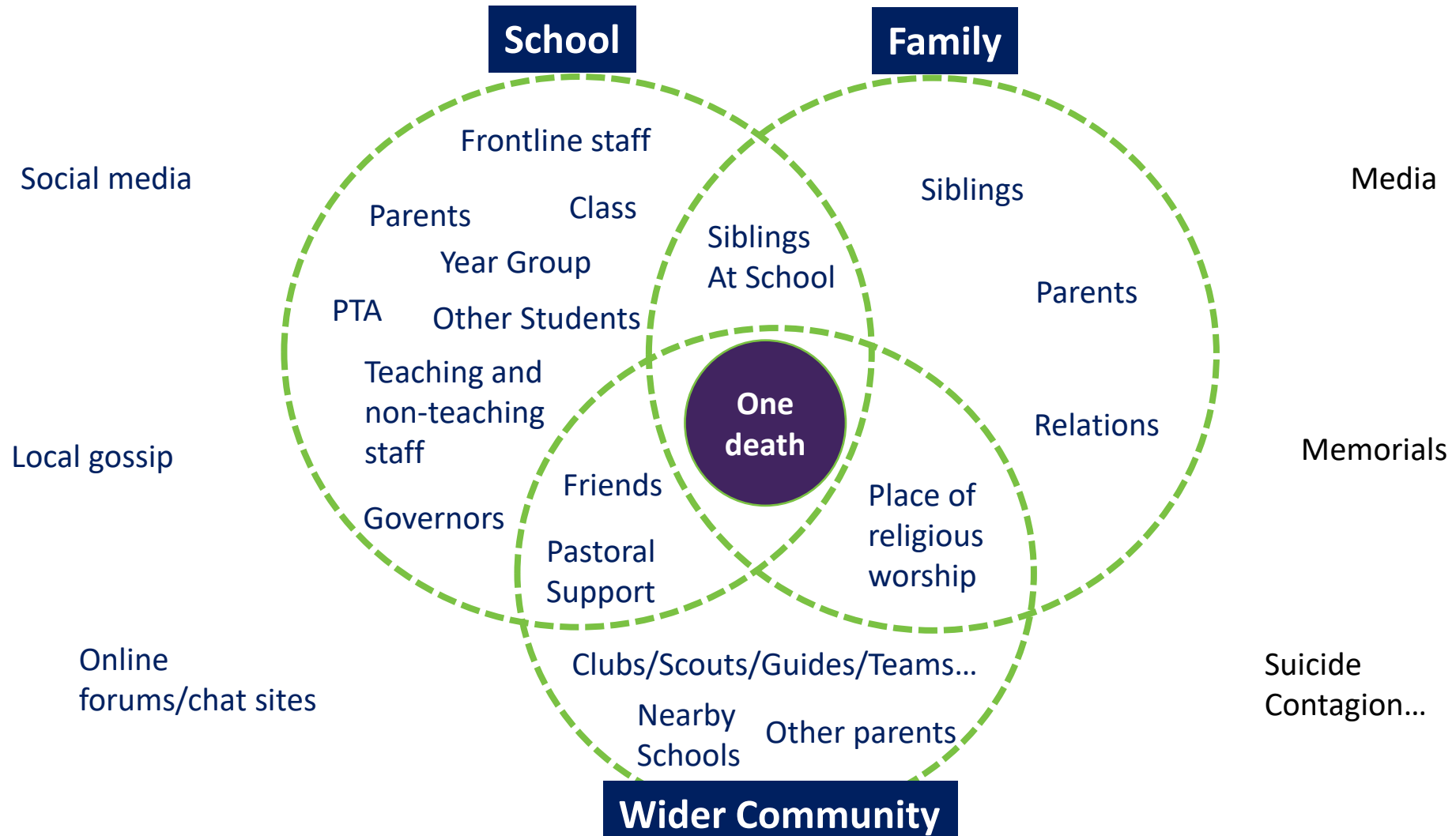
Richard Dunnill, *Samaritans of Shrewsbury,*

Anna Gillions, *Shrops & Telford Bereaved by Suicide Service*

Bereavement and Suicide Bereavement

1. **Nobody likes to think about a death in school.**
2. **Suicide is the leading cause of death for young people in the UK and Ireland.** Sadly, it is always a possibility that a student, parent or member of staff might choose to take their own life.
3. **The pandemic and associated lockdowns** have limited people's ability to grieve for any kind of bereavement
4. **As always, the best approach is** hoping for the best while (critical incident) planning for the worst
5. **Help is available...**

Impact on the community



Shropshire Bereavement Service

PLEASE SHARE AS WIDELY AS POSSIBLE WITH STAFF AND PARENTS



Suffered a bereavement?

NEED TO TALK?

0345 678 9028



**FREE
COUNSELLING**

www.Shropshire.gov.uk

Help is just a phone call away

**If you live in Shropshire and you're struggling
with the loss of a friend or loved one, give us a call.**

Shrops & Telford Bereaved By Suicide Service

PLEASE SHARE AS WIDELY AS POSSIBLE WITH STAFF AND PARENTS

Suicide Bereavement Support Service

- Early contact
- Face-to-face, phone or email
- Practical and emotional support

Telford

talk2@telford-mind.co.uk

07857 977616

Shropshire

bereavementsupport@shropshiremhs.com

07483 906788



SAMARITANS

Step by Step

Helping school communities respond to
and recover from a suspected suicide

Postvention

1. Free and time unlimited support and guidance to schools, colleges, universities and other youth settings
2. Helping school communities come to terms with what has happened and prevent stigma and isolation
3. Supporting school communities to reduce the risk of further suicide by critical incident planning
4. Reaching out to people at high risk of suicide.

Contact us on 0808 168 2528 (24/7)
stepbystep@samaritans.org

SAMARITANS

Shrewsbury

Support for you, your students, staff & communities

Bereavement
by sudden,
unexplained
death/suicide

Bereavement and critical incident response – first 72 hrs, advice and guidance
Educational Psychology Service
Phone 01743 258414 sheri.wright@shropshire.gov.uk

Samaritans Step-by-Step
Whole school approach – advice, guidance & emotional support
Contact us on 0808 168 2528 (24/7) stepbystep@samaritans.org

Suicide Bereavement Service – 1:1 support for anyone affected
Phone 07483906788 bereavementsupport@shropshiremhs.com

Crane Quality Counselling
NEW - Under 11s – with parent/guardian/carer support (via Bereavement Service No.)
11+ - Teen Talk – confidential counselling for 11+
Phone 01743 240 546 -- lin.foley@live.com

Children's Hospice
NEW support offer under development – information will come asap

Shropshire Bereavement Service (SC and 4 local charities)
Immediate support + 6 free counselling sessions for anyone affected by bereavement
Phone 0345 678 9028

**Any
Bereavement**